

# **ALL-FILL**



**A U G E R F I L L I N G T E C H N O L O G Y**



**ALL-FILL INTERNATIONAL LTD**  
has harnessed over 30 years of powder filling technology to offer its customers the following benefits:

## THE EQUIPMENT

Fully enclosed filling head mounted on a solid head support plate for strength and rigidity

Stainless steel contact parts as standard on all machines

Augers designed to a high technical specification and machined from solid stainless steel, giving crevice-free contours

Choice of drives: servo, flux vector inverter and clutch/brake

Plc control via touch-screen panel with memory of all variable parameters

Independent agitator drive system permitting 4 modes of agitation for optimum product handling

Self-aligning quick-release hopper, auger and funnel, removable without tools in seconds

Fill weights from 10mg to 50kg

## THE COMPANY

ISO 9001 accredited and fully compliant with EC standards

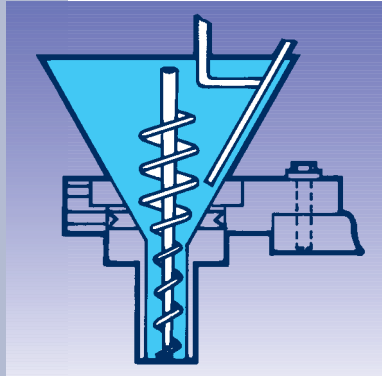
Manufacturing bases in the UK and the USA

Worldwide Agent and Distributor network

Turn-key project capability with full after-sales support and service

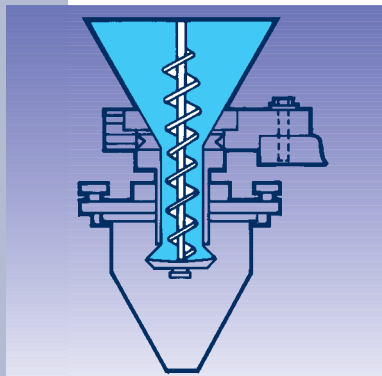
In-house customer test and demonstration facility

CAD-equipped in-house design department for bespoke filling solutions to non-standard applications



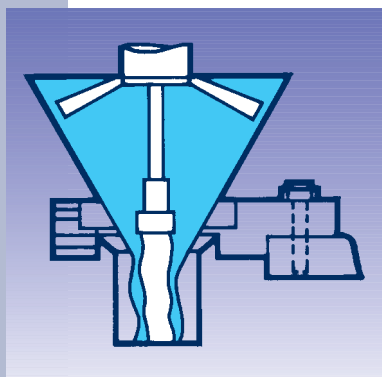
### POWDERS: NON FREE-FLOW

Self-feeding auger assures positive handling of powder and paste products. Standard and custom-made augers and funnels are available.



### POWDERS: FREE-FLOW

Straight auger with spinner plate ensures positive cut-off between fills. Funnel with optional dust extraction facility collects and guides product into container.



### LIQUIDS, CREAMS & PASTES

Progressive cavity pump for accurate metering of liquids and semi-liquids. Manifolds and multi-nozzle systems available. Optional positive cut-offs and suck-backs according to product characteristics.

# AUGER FILLING TECHNOLOGY

## FLEXIBLE OPERATION

Since All-Fill was founded in 1969, it has established itself as one of the World's leading designers and manufacturers of high specification auger-based filling equipment – a reputation achieved by continued innovation, commitment to quality and maintaining the highest standards of engineering.

One of the keys to All-Fill's success has been the durability and flexibility of the filling head. An extremely wide range of products, including both free-flowing and non free-flowing powders, granules, pastes and creams (even water-thin liquids) can be handled on the same machine with minimal change parts.

The versatility of the All-Fill heads, whether servo, flux vector inverter or clutch/brake, enables machines to be upgraded from volumetric to gravimetric filling, or from semi-automatic to fully automatic operation as requirements change.



Series 400 quad-head in-line filler for filling instant coffee into round and square glass jars and tin cans.

Features include:

Wormscroll container feed

Flex-seal dust control

Volumetric filling of instant coffee powder

Gravimetric filling for freeze dried and agglomerated coffee

Container vibration for granule settling.

## COMPREHENSIVE RANGE

All-Fill design and manufacture a wide range of filling equipment, including: semi-automatic, in-line automatic and rotary systems.

**Semi-automatic** machines can be either volumetric or gravimetric with a choice of drive systems. Every machine has an independent agitator drive system, which can be fixed or variable speed. Gravimetric systems are offered with single shot, bulk and dribble, or bulk and predict options, together with full reporting functions when required.

**In-line automatic** systems are available with one, two, four or more filling heads. Features include easy-clean conveyor and stainless steel product contact parts, vibration at point of fill, lift system for smooth bottom-up filling, no-container no-fill control, no tools changeover, and positive container indexing. Other standard options include tare and gross weighstations, feed-back control, and feed systems to the filling heads.

**Rotary machines** are available with one to four filling heads over turrets of 12 to 48 pockets, with outputs up to 400 containers per minute. Again, these can be integrated with gross or tare and gross check-weigher feed-back systems.



The latest generation of Series 10 filler, thousands of which have now been sold worldwide, feature a choice of auger drives: servo, flux vector inverter or clutch/brake; independent drive for the agitator, touch-screen control, and quick-release stainless steel hopper. A host of options are available, to suit individual requirements.



*Larger fill weights or inconsistent and expensive products demand a gravimetric approach for improved accuracy and reduced give-away.*

*The above system combines live weighing with versatility, filling pails and sacks up to 25 kilos. The pneumatic bag clamp ensures that sacks are held securely during filling, but is parked neatly beneath the roller conveyor in a simple, fast no-tools changeover when pails are being filled.*



*Twelve pocket continuous motion rotary filler for filling over 500 spice/herb combinations into PET catering jars at 120 jars per minute. Features the AFI 'fully sealed' filling system, adjustable vibration settling, check weigher feed-back and touch-screen control.*

## **PROGRAMMABLE CONTROL**

The latest generation sensitive touch-screens, coupled with plc control (Siemens as standard) permit on-screen selection of all variable parameters via super-clear full colour (or black and white) pictorals, photographs and graphics with memory for speed and simplicity of set-up and operation.





*Series 100 system for bottom-up filling of food powders and bouillon paste into square and round tubs, with tub de-nesting/presentation, lifting/lowering during filling, lid de-nesting/presentation and pressing.*

## TECHNICAL BACK-UP

Good design, quality components and precision engineering are the hallmarks of a good product. This winning combination gives All-Fill its technical edge, confirmed by a formidable list of 'blue chip' customers.

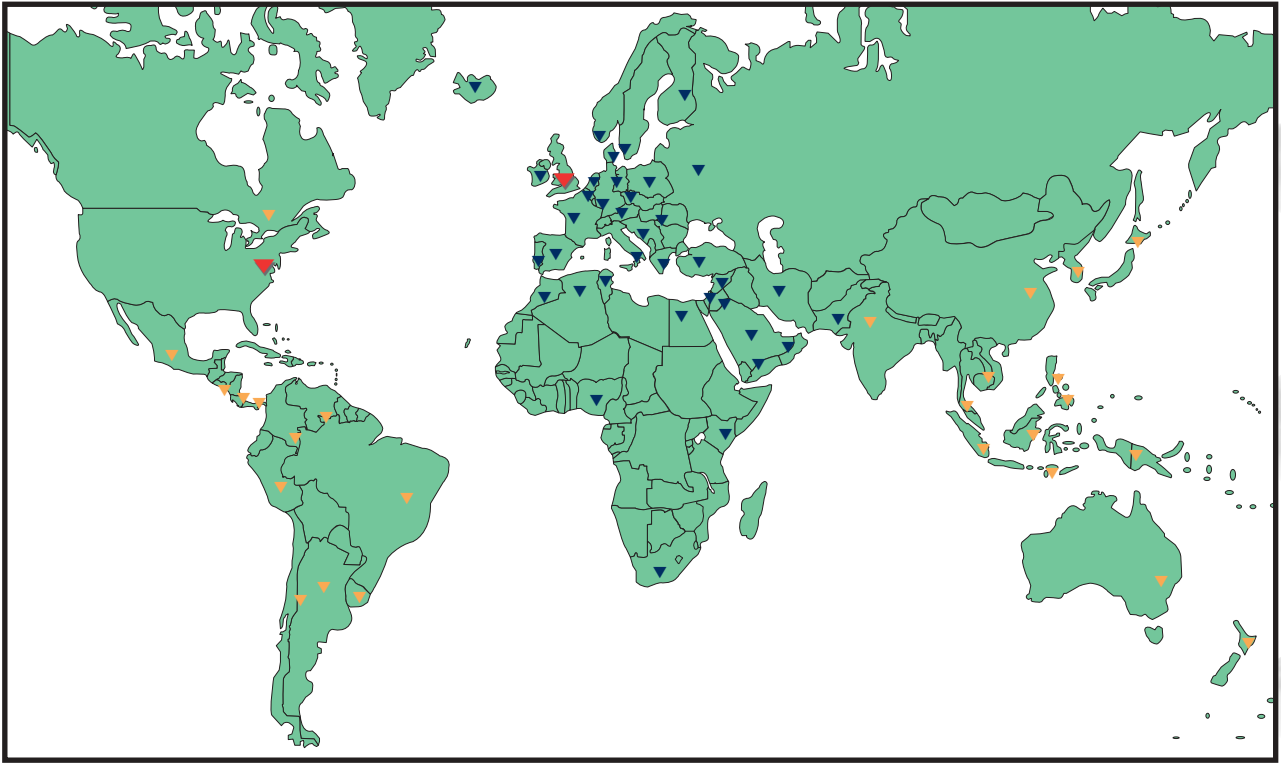
Maintaining these standards is reliant upon good team-work and systems. All-Fill International, operating from its modern purpose-built factory in Sandy, have invested in sophisticated CAD hardware and software, ensuring its design and build capability is always at the forefront of technology.

Precision engineering requires a highly trained and skilled workforce. The manufacturing and production plant in Sandy, Bedfordshire boasts a workforce with the complimentary skills and crafts necessary to design and manufacture machinery with a build quality second to none, ISO9001 accredited for design, manufacture and after-sales support.

Our comprehensive research, development and test facility is constantly working to provide innovative solutions to our clients' powder filling and container handling needs.

Our staff, many with a lifetime's expertise in powder filling, are on hand to provide advice, assistance and training  
**- the complete technical back-up.**





ALL-FILL NETWORK WORLDWIDE

- ▼ Manufacturing bases.
- ▼ Countries served by ALL-FILL International Ltd.
- ▼ Countries served by ALL-FILL Inc.

ALL-FILL International has fast become a leader in the global market with its reputation as a supplier of high quality auger-based filling equipment.



Client needs and product specifications are often diverse and challenging, but the combined expertise of ALL-FILL International and its sister company in the USA, ALL-FILL Inc., provides a formidable force that has the capability to provide a solution to virtually every powder filling application – **worldwide.**



ALL-FILL INTERNATIONAL LIMITED  
REGISTERED TO ISO 9001  
CERTIFICATE NO. A6246



**ALL - FILL INTERNATIONAL LIMITED**  
Unit 5 Gateshead Close • Sunderland Road  
Sandy • Bedfordshire • SG19 1RS • UK

tel: +44 (0) 1767 691100  
fax: +44 (0) 1767 681406  
email: [info@allfill.co.uk](mailto:info@allfill.co.uk)  
website: [www.allfill.co.uk](http://www.allfill.co.uk)